

# VARIOmulti Goes Digital

A prosthetic concept for digitally  
fabricated multi-unit restorations



Driven by science, not trends.

## Headquarters

Thommen Medical AG  
Neckarsulmstrasse 28  
2540 Grenchen | Switzerland  
Tel. +41 61 965 90 20  
Fax +41 61 965 90 21  
[info@thommenmedical.com](mailto:info@thommenmedical.com)

# Your advantages

You can use high quality materials for temporary and final restorations to achieve optimum treatment outcomes. You can benefit from the advantages of a CAD/CAM fabricated zirconium oxide restoration.

A suitable CAD/CAM system allows you to keep value creation in-house and increase productivity by using digital design and fabrication processes. In the long term, this leads to improved patient experiences and potential cost savings for dental laboratories, practices and their patients.

## Prof. Dr. Mauro Merli

Prof. Dr. Mauro Merli emphasizes the advantages of the efficient, reliable, user and patient-friendly digital process to create a complete dental prosthesis for partially and fully edentulous patients, and to be able to meet the demands and expectations of patients.



*«From the patient's point of view the digital workflow reduces the unpleasantness of the treatment to a minimum. The clinical phase is less time-consuming and, at the same time, costs are reduced. The laboratory process is considerably shortened and permits the use of high-quality materials.»*

# VARIOmulti

## Goes Digital

You can use the new digital prosthetic solution for the VARIOmulti system to provide partially and fully edentulous patients with a fixed dental prosthesis of reliable quality from Thommen Medical.

### Our digital components at a glance:



#### **VARIOmulti titanium base for CAD/CAM:**

- Flexible – you can adjust the height of the titanium base (shortenable) to fit the suprastructure and the materials used
- Ideal for multi-unit bridges with large divergences of the implant axes – the conical geometry ensures a stress-free, precise insertion of the prosthesis



#### **VARIOmulti scan abutments:**

- Safe and quick handling – the result of the 1-piece design without additional screw
- Improved intraoral scan results – achieved by the two lengths available for different anatomical situations and a ceramized surface
- Optimized for multiple use – achieved by the 1-piece body made of pure titanium and a surface treatment with high resistance

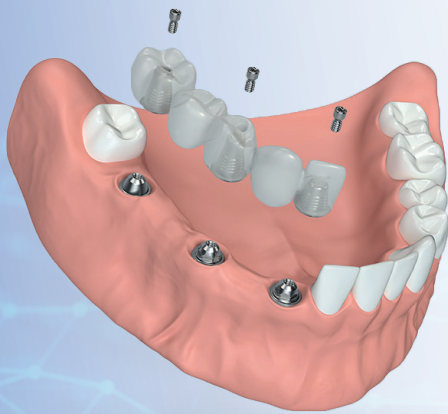


#### **VARIOmulti analog for CAD/CAM and its insertion aid:**

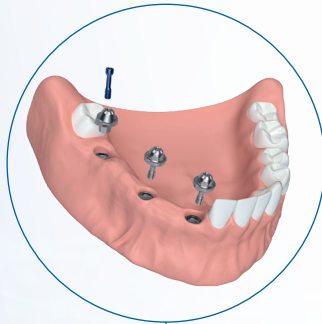
- Secure and reliable positioning – particularly suitable for 3D-printed master and plaster casts, thanks to an ingenious design and high-precision manufacturing
- Easy and efficient insertion – with the aid of the sophisticated holding system and well-designed insertion aid

# Digital treatment with the VARIOmulti system

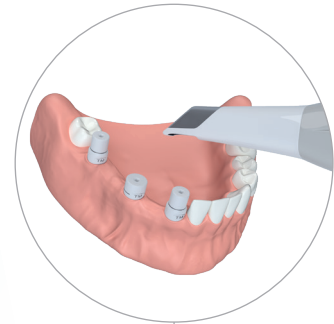
## Fully digital CAD/CAM process



Restoration with primary abutments

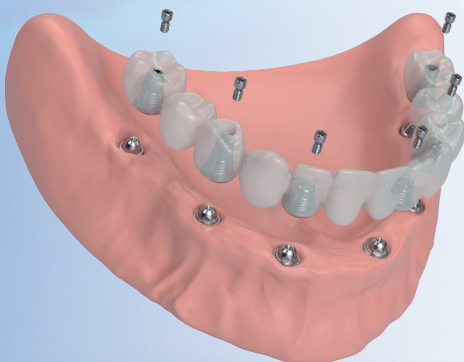


Impression taking with an intraoral scan

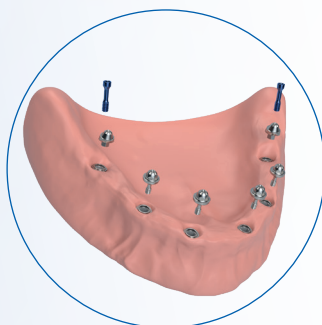


Analog technique

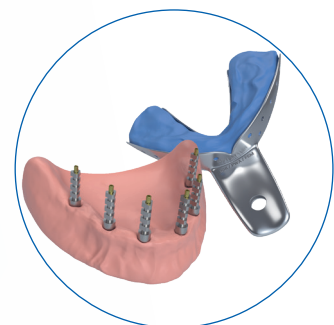
## Semi-digital CAD/CAM process\*



Restoration with primary abutments



Conventional impression taking at abutment level



Analog technique

\*For restorations, which replace more than one quadrant, we recommend conventional impression taking.

**You can select between the fully digital CAD/CAM process with intraoral impression taking or the semi-digital CAD/CAM process with conventional impression taking.**

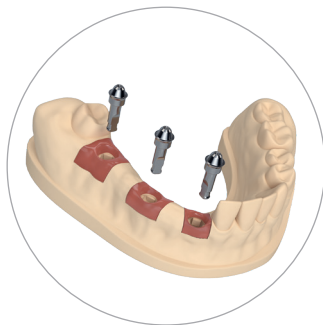
Libraries are available for the following CAD systems:

**3shape**  **exocad**

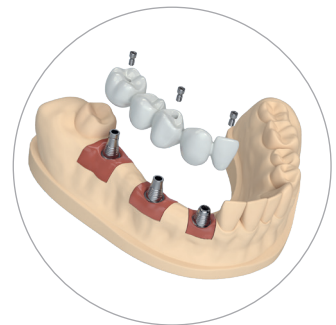
CAD design of the suprastructures



Master cast fabrication using the 3D printing process

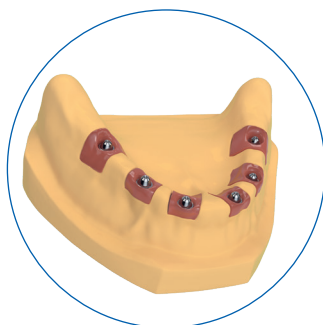


Fabricating the suprastructures using the milling machine



**Digital technique**

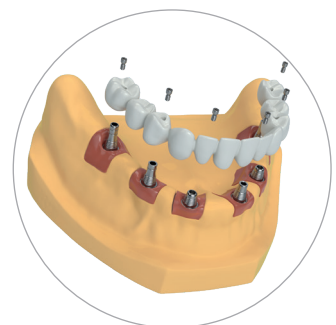
Master cast fabrication in the casting process



CAD design of the suprastructures



Fabricating the suprastructures using the milling machine



**Digital technique**